



AMERICAN HERITAGE GIRLS UNIFORM FAQ

1.513.771.2025 | americanheritagegirls.com/store



AMERICAN
HERITAGE GIRLS®
FAITH | SERVICE | FUN

WHY WEAR THE AHG UNIFORM?

Wearing an AHG Official Uniform can help Girl and Adult Members grow in many of the values represented in the AHG Creed words:

LOYAL

The AHG Official Uniform signifies belonging to a group that shares common beliefs and goals. Just as sports team members wear team uniforms, a Girl Member or Adult Member wearing their AHG Official Uniform symbolizes being a part of an organization that is dedicated to building women of integrity through service, life skill development, and social activities. Wearing the AHG Official Uniform shows others that you are loyal to the AHG Oath, Creed, and Mission.

RESPECTFUL AND RESPONSIBLE

Wearing and keeping a uniform neat, tidy, and up-to-date takes a lot of responsibility. Girls who take responsibility for their AHG Official Uniform will learn to respect their AHG commitments.

PURE AND COMPASSIONATE

Uniforms are an equalizer for girls in their Unit Level. Instead of worrying about wearing the latest trends to their Troop meeting, girls can attend AHG meetings with pure hearts, not showing off or worrying about whether they will fit in. This will allow girls room to grow in compassion for their Troop friends, without worrying about social pressures.

PERSEVERANT

Girls can aspire to wear the next Program Level's AHG Official Class A Uniform. After an Explorer has worked hard to earn her Lewis & Clark Award, she will look forward to wearing her Pioneer Uniform to showcase that Award. For a Tenderheart who aspires to be like her Explorer mentor, graduating into her own Explorer Uniform will be a meaningful part of achieving the same Program Level as her role model. Seeing the uniforms of older girls helps younger girls to persevere in their AHG journey. The colorful AHG Official Class B Reach Higher T-Shirts are another exciting incentive for girls to advance to the next Program Level.

Logistically, AHG Official Class A Uniforms and AHG Official Class B Uniforms are useful when a Troop is participating in a community activity like marching in a parade or serving at a local food pantry. Community members are able to identify the Troop as being a single group and will also come to recognize the uniform as a symbol of AHG's values and Mission. Members of Troop leadership are also able to better keep track of their girls in AHG Uniforms while out in the community when girls are in uniform.

This Uniform FAQ is meant to answer common questions about the AHG Uniform for Girl and Adult Members. For step-by-step instructions on how to prepare a new vest or sash (e.g. placing items like Troop numbers, flag patch, and AHG Membership Pin) please refer to the Girl Handbook.



GUIDELINES FOR GIRL MEMBERS

AHG OFFICIAL CLASS A UNIFORM



1. What is the AHG Official Class A Uniform?

The AHG Official Class A Uniform standards are listed in the AHG Girl Handbook and in AHGsource (www.ahgconnect.org/source/documents). All Girl Members are required to have this uniform. As updates are made and the handbooks and uniform options are expanded, conflict in previously published information regarding uniform standards may arise. This document supersedes any previously published information regarding uniform standards.

2. What type of polo shirt is a Girl Member allowed to wear with her AHG Official Class A Uniform?

Girls are required to wear the AHG Official Short-Sleeved Girl Uniform Polo in white or red, depending on Program Level. Troops look uniform and best represent the program when all girls are wearing the embroidered AHG Official Short-Sleeved Girl Uniform Polos.

3. Should shirts be tucked in or left untucked when one is in uniform?

Girls may choose to tuck or untuck their shirts as a personal choice, as long as the overall look is neat and tidy.

4. What types of bottoms can be worn with the AHG Official Class A Uniform?

A girl may choose to wear pants, capris, skirts, skorts, or shorts with their AHG Official Class A Uniform. When selecting shorts and skirts to wear as part of the AHG Official Class A Uniform, there are important guidelines to follow to ensure uniformity and modesty are upheld:

- Shorts should be modest and the hem should reach past mid-thigh towards the knee. For most girls, this is around 2" above the knee. Bermuda-style options tend to achieve this fit best.
- Skirts and skorts should be modest and should be longer than mid-thigh towards the knee. (For most girls, this is around 2" above the knee.) Skirts or skorts with a slit must also be modest and the slit should be no higher than below mid-thigh.

5. What color bottoms can be worn with the AHG Official Class A Uniform?

Bottom color options depend on AHG Program Level.

- Pathfinder: navy
- Pioneer: navy and khaki
- Tenderheart: navy
- Patriot: navy and khaki
- Explorer: navy and khaki

6. What types of bottoms cannot be worn with the AHG Official Class A Uniform?

Jeans, leggings, jeggings, and cargo pants are not approved as part of the AHG Official Class A Uniform.

7. What shoes are required as part of the AHG Official Class A Uniform?

Closed-toe shoes are required for the AHG Official Class A Uniform. Shoes should be consistent with other uniform pieces, be modest and not be worn to attract attention to an individual member.

8. For Tenderhearts and Explorers, should the neckerchief be worn under or over the collar?

The neckerchief should be rolled tightly and worn under the collar. Neckerchiefs should not be embellished nor have add-ons attached.

9. What options are available other than the AHG Official Short-Sleeved Girl Uniform Polo in colder weather?

Girl Members may wear a solid white or red long-sleeved shirt under the AHG Official Polo in colder weather.

10. What types of tights or hosiery may be worn with skirts or shorts?

Opaque tights may be worn in white, navy or red solid colors and should complement the uniform. Hosiery should be complementary to skin tone or navy and should complement the uniform.

11. What type of outerwear and headgear may be worn outdoors in colder weather?

Proper outerwear (such as coats and jackets) and headgear (such as hats) are essential to Health & Safety. Items should be appropriate for the conditions, as consistent as possible with other uniform pieces, and should not include offensive language or appear to support organizations which are not aligned with the AHG Oath, Creed, and Mission.

AHG OFFICIAL CLASS B UNIFORM

1. What is the AHG Official Class B Uniform?

There are two t-shirt styles considered part of the AHG Official Class B Uniform. The AHG Official Class B Classic T-Shirt, available in red and blue, and the AHG Official Class B Reach Higher T-Shirt, available in multiple colors based on Program Level.

2. When is it appropriate to wear the AHG Official Class B Classic T-Shirt?

The AHG Official Class B Classic T-Shirt is preferred to be worn for media appearances, service projects, parades, and during the flag ceremony at camp.

3. When is it appropriate to wear the AHG Official Class B Reach Higher T-Shirt?

The AHG Official Class B Reach Higher T-Shirt is preferred to be worn for field trips and camping, or any outing/activity where girls are in groups by Program Level.

4. Does my Troop have to purchase the AHG Official Class B Reach Higher T-Shirts?

The AHG Official Class B Reach Higher T-Shirts are an optional uniform item for Troops looking to expand uniform options for their members.

5. Can a Troop wear a mixture of the two AHG Official Class B Uniform T-Shirts?

No. Girls must be in the same AHG Official Class B Uniform T-Shirt style (either the AHG Official Class B Classic T-Shirt or the AHG Official Class B Reach Higher T-Shirts) when the Troop has opted to wear their AHG Official Class B Uniforms as a collective group.

6. What types of bottoms can be worn with the AHG Official Class B Uniform?

A girl may choose to wear any of the approved bottoms available to wear with the AHG Official Class A Uniform. Please refer to the girl guidelines on wearing the AHG Official Class A Uniform for specific requirements. Girls are also permitted to wear jeans with the AHG Official Class B Uniform.

7. What types of bottoms cannot be worn with the AHG Official Class B Uniform?

Leggings and jeggings are not approved as part of the AHG Official Class B Uniform. Cargo pants are only permitted to be worn as a part of the AHG Official Class B Uniform while at camp.

8. If an individual Troop produces a Troop shirt, is that considered an AHG Official Class B



Uniform T-Shirt?

Troop-designed t-shirts are not considered an AHG Official Class B Uniform T-Shirt. The only AHG Official Class B Uniform T-Shirts are the AHG Official Class B Classic T-Shirt and the AHG Official Class B Reach Higher T-Shirt.

SPIRIT WEAR

1. What is spirit wear?

Spirit wear is considered to be any Troop-designed and purchased apparel or other AHG non-uniform shirt found in the AHGstore and worn with appropriate modest pants, jeans, shorts, skirts, or capris.

BADGES

1. What is a badge?

An American Heritage Girls Badge is the hexagon-shaped embellishment for a vest or sash. Tenderhearts, Explorers, Pioneers, and Patriots are eligible to earn badges.



2. Where are badges placed on the uniform?

Badges are placed on the front of the vest or sash.

3. In what order are badges placed on the uniform?

Instructions for badge placement are included in the AHG Girl Handbook. The flowers should include one badge from each Badge Frontier, starting with the Heritage Frontier and then moving clockwise around the flower to Family Living, Arts, Outdoor Skills, Personal Well-Being, and Science & Technology. It is also permissible to “book flap.” This is acceptable for all Program Levels. Badges may be overlapped by sewing along the top edge of the badge creating a “book flap.”

4. Are there specific measurements to keep in mind when placing badges on a vest or sash?

The measurement guidelines in the Girl Handbook are general guidelines to ensure a well-balanced vest or sash and consistency in placement. Some vests and sashes may be larger or longer and may have additional spacing at the bottom.

5. Are there any tips on how to attach badges?

Although badges have an iron on backing, sewing or using Badge Magic, a product available in the AHGstore, are suggested to reduce wear and tear and keep badges attached to a girl’s vest or sash.

6. Can badges be extended beyond the vest or sash?

Badges may not extend beyond the edges of the Girl Member’s vest or sash.

7. For Pioneers and Patriots, does it matter in which order the Level Awards are placed on the sash?

The recommended method for starting the first flower is the Joining Award or Lewis & Clark Level Award, if earned at the Explorer Level. The second flower should be started with the Harriet Tubman Level Award, if earned. The third flower should be started with the Dolley Madison Level Award, if earned. It is also permissible to “book flap” the Dolley Madison Level Award over the Lewis & Clark Level Award. A “book flap” is created by overlapping and sewing along the top edge of the badges.



8. Can badges be taken off previous uniforms?

Badges cannot be taken off or moved from previous Program Level vests.

PATCHES

1. What is a patch?

Patches are items you earn for participating in an event, activity, or Patch Program.

2. Where are patches placed on the uniform?

Patches are placed on the back of the vest or sash. Pathfinders who earn patches may affix them to the Pathfinder Tote Bag.

3. Are there any tips on how to attach patches?

Although most patches have an iron on backing, sewing or using Badge Magic, a product available in the AHGstore, are suggested to reduce wear and tear and keep patches attached to a girl's vest or sash.

4. What if all the patches do not fit on the back of a vest or sash?

With so little room to work with, the recommended strategy for Troops is that only Troop-earned and activity patches be allowed on the back of a vest or sash. Patches from outside activities may be displayed on items such as tote bags or backpacks. Individual Troop Boards may decide the Troop policy, for instance, allowing meaningful patches from family vacations or other activities.

5. When advancing to the next Program Level, may girls move their patches to the next Program Level's vest or sash?

A girl's vest or sash should represent a girl's current Program Level and current activities at that Program Level, therefore moving patches from a previous Program Level would not be considered acceptable.



SPORTS PINS

1. What are sports pins and discs?

Sports pins are triangle-shaped pins that recognize a girl's participation in a sport. Extra hours of sport participation are designated by colored discs placed behind the pin. For each additional 100 hours of participation in the same sport, a colored disc may be earned.

2. Where are sports pins placed on the uniform?

Sports pins are placed on the front of the vest, along the bottom hem of the right side or near the bottom of the sash.

3. May girls move their sports pins to the next Program Level's vest or sash?

A girl's vest or sash should represent a girl's current AHG story, so girls may move a sports pin from one uniform to the next if she still remains active in that sport. Sports pins should not be moved if the girl is no longer active in that sport.



FAITH AWARDS

1. What is a Faith Award?

Faith Award Programs give an American Heritage Girl a way to grow stronger in her faith and service to God. An American Heritage Girl wears her Faith Award with special pride as it shows publicly her commitment to spiritual growth.



2. Where are Faith Awards placed on the uniform?

Medals and pins are placed on a girl's vest under the Troop numbers or on a girl's sash under the AHG Flag Patch. Patches are placed on the back of the vest or sash.

3. When advancing to the next Program Level, may girls move their Faith Awards to the next Program Level's vest or sash?

A girl's vest or sash should represent a girl's current AHG story, so girls may not move their current Faith Awards from one uniform to the next.

PRESIDENTIAL VOLUNTEER SERVICE AWARD



1. What is a Presidential Volunteer Service Award?

A Presidential Volunteer Service Award (PVSA) is a recognition from the President of the United States for completing a number of service hours.

2. Where is the PVSA placed on the uniform?

The Presidential Volunteer Service Award Pin is worn on the front of the vest or sash above the Troop number. Although the Presidential Medallion is not a part of the Girl Uniform, it may be worn to meetings.

NATIONAL HONOR TROOP AWARD

1. What is the National Honor Troop Award?

The National Honor Troop Award (NHTA) is an award given to the girls of a Troop that maintains a healthy balanced program and meets objectives set by AHG, Inc. The NHTA includes a patch and arcs that signify the level of excellence.



2. Where is the National Honor Troop Award placed on the uniform?

The NHTA is placed on the front of a girl's vest beneath the Service Stars, and near the top of the back of a girl's sash.

SERVICE STARS



1. What are Service Stars?

Service Stars are earned through providing service to others. The color of the Service Star is dependent on the Program Level and amount of service hours completed.

2. Where are Service Stars placed on the uniform?

The first set of Service Stars should be placed below the AHG Flag Patch. The second row of Service Stars should be placed with the point of each star in between the first row of Service Stars. Service Stars should be bookflapped when earned in large quantities. See the Badges section of this Uniform FAQ for instructions.

3. Are there any tips on how to attach Service Stars?

Sewing or using Badge Magic, a product available in the AHGstore, are suggested to reduce wear and tear and keep Service Stars attached to a girl's vest or sash.

PIONEER AND PATRIOT UNIFORM QUESTIONS

1. How should the sash be worn?

Pioneers and Patriots should wear their sash from the right shoulder to the left hip.

2. How can a girl keep her sash on the shoulder?

The recommended method is to sew a small button under the collar of the AHG Official Short-Sleeved Girl Uniform Polo at the shoulder seam. Sew a small loop of round elastic to the top of the sash at the seam.

The elastic loop is then used to slip over the button. This will keep the sash in place. An alternative is to sew magnets into a strip of material on the underside of the sash and slide the connecting magnet under the shirt. Velcro is not recommended. This may also apply to the Tenderheart and Explorer Program Levels to keep vests on.

3. How should one accommodate the large number of badges and patches that a girl may earn as a Pioneer or Patriot?

Pioneers and Patriots may choose to have separate sashes for their Pioneer and Patriot Levels. Once finished with the Pioneer Level, they may start the first flower on their Patriot sash with the Harriet Tubman Level Award or the Joining Award. If a Patriot wishes to purchase a new sash, she may move her gold badges to her new sash.

Girls may not wear two sashes side by side or crossed across their chest (one on each shoulder). If they choose to switch sashes after their Pioneer Level, they will only wear their Patriot sash from that point forward.

If a Pioneer or Patriot chooses to keep the same sash the entire time, it should remain neat and badges should be organized when sewn onto the sash. After creating the two flowers and lining up additional badges across the bottom of the sash, badges may be overlapped by sewing along the top edge of the badge creating a “book flap.” A “book flap” is created by overlapping and sewing along the top edge of the badges.



STARS & STRIPES AWARD

1. What is the Stars & Stripes Award?

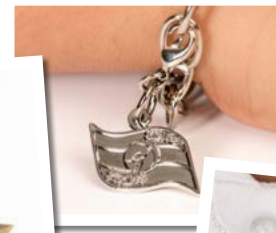
The Stars & Stripes Award is American Heritage Girls' highest honor.

2. Where is the Stars & Stripes Award placed on the uniform?

The Stars & Stripes Award Patch should be attached to the AHG Official Short-Sleeved Girl Uniform Polo using the Membership Pin. The placement is on the chest on the side opposite the sash. When a recipient reaches the age of 18 or when the Leader-in-Training (LIT) is of age (18-24 years old), the patch may still be worn on the AHG Official Adult Uniform Polo on the side opposite the AHG Logo. In addition, AHG provides the Stars & Stripes Award Medallion or Charm as optional recognitions. Stars & Stripes Award items are available for purchase in the AHGstore.

3. At what events (if any) does a Stars & Stripes Award Recipient wear her sash?

Girl Members should remain active in the Troop after earning the Stars & Stripes Award and should wear their uniforms. The Stars & Stripes Award Insignia may be worn at all times and should be attached to the AHG Official Girl Uniform Polo using the Membership Pin.



GUIDELINES FOR ADULT MEMBERS

AHG OFFICIAL CLASS A UNIFORM

1. What is the AHG Official Class A Uniform?

The AHG Official Class A Uniform standards are listed in AHGsource (www.ahgconnect.org/source/documents). Any Adult Member is allowed and encouraged to wear this uniform. As updates are made the Girl Handbooks and uniform options are expanded, conflict in previously published information regarding uniform standards may arise. This document supersedes any previously published information regarding uniform standards.

2. Does it matter which color of the AHG Official Adult Uniform Polo Adult Members wear?

Adult Members may wear either the red or navy AHG Official Adult Uniform Polo or the AHG Official Adult Uniform Dry-Wicking Polo at any time and when working with any Program Level.

3. What options are available other than the AHG Official Short Sleeved Adult Uniform Polo in colder weather?

The AHG Official Long-Sleeved Polo is also an approved cold weather uniform item for Adult Members. Adult Members may also wear a solid red or navy long-sleeved shirt under the AHG Official Polo in colder weather.

4. When should the AHG Official Adult Uniform Dress Blouse be worn?

The AHG Official Adult Uniform Dress Blouse was created to be worn for dressier occasions such as award ceremonies and recruitment events. An Adult Member may choose to wear their AHG Official Adult Uniform Dress Blouse any time they would wear their regular AHG Official Class A Uniform.

5. Does the AHG Official Adult Uniform Dress Blouse replace the AHG Adult Uniform Polo?

The AHG Official Adult Uniform Dress Blouse is an additional uniform option to the AHG Official Adult Uniform Polo.

6. Are Adult Members required to purchase the AHG Official Adult Uniform Dress Blouse?

The AHG Official Adult Uniform Dress Blouse is an optional uniform piece.

7. Why is the AHG Official Dress Blouse light blue?

The AHG Official Adult Uniform Dress Blouse is the same color as the background of the AHG Badges.

8. What color bottoms can be worn with the AHG Official Class A Uniform?

Adults may wear navy, khaki, or black bottoms.

The style and fit requirements for the following items are the same for AHG Adult Members and Girl Members:

- Bottoms
- Shoes
- Outerwear
- Headgear
- Hoisery

(Please refer to the girl guidelines on wearing the AHG Official Class A Uniform.)



AHG OFFICIAL CLASS B UNIFORM

1. What is the AHG Official Class B Uniform?

There are two t-shirt styles considered part of the AHG Official Class B Uniform. The AHG Official Class B Classic T-Shirt, available in red and blue, and the AHG Official Class B Reach Higher T-Shirt, available in gray for Adult Members.

2. When is it appropriate to wear the AHG Official Class B Classic T-Shirt?

The AHG Official Class B Classic T-Shirt is preferred to be worn for media appearances, service projects, parades, and during the flag ceremony at camp.

3. When is it appropriate to wear the AHG Official Class B Reach Higher T-Shirt?

The AHG Official Class B Reach Higher T-Shirt is to be worn for field trips and camping, or any outing/activity where girls and Adult Members are in groups by Program Level.

4. Does my Troop have to purchase the AHG Official Class B Reach Higher T-Shirts?

The AHG Official Class B Reach Higher T-Shirts are an optional uniform item for Troops looking to expand uniform options for their members.

5. Can a Troop wear a mixture of the two AHG Official Class B Uniform T-Shirts?

No. Adult Members must be in the same AHG Official Class B Uniform T-Shirt style (either the AHG Official Class B Classic T-Shirt or the AHG Official Class B Reach Higher T-Shirts) when the Troop has opted to wear their AHG Official Class B Uniforms as a collective group.

6. What types of bottoms can be worn with the AHG Official Class B Uniform?

An Adult Member may choose to wear any of the approved bottoms available to wear with the AHG Official Class A Uniform. Please refer to the girl guidelines for specific requirements. Adult Members are also permitted to wear jeans with the AHG Official Class B Uniform.

7. What types of bottoms cannot be worn with the AHG Official Class B Uniform?

Leggings and jeggings are not approved as part of the AHG Official Class B Uniform. Cargo pants are only permitted to be worn as a part of the AHG Official Class B Uniform while at camp.

8. Can any parent or adult in my Troop wear an AHG Official Class B T-Shirt while we are on a field trip, at a parade, etc.?

Only Adult Members are permitted to wear the AHG Official Class B Classic T-Shirt and AHG Official Class B Reach Higher T-Shirt. Any non-registered adult looking to sport AHG-specific merchandise must only wear spirit wear.

The style and fit requirements for the following items are the same for AHG Adult Members and Girl Members:

- Bottoms
- Shoes
- Outerwear
- Headgear
- Hoisery

(Please refer to girl guidelines on wearing the AHG Official Class B Uniform.)



AHG ADULT RECOGNITION AWARDS

1. What is an AHG Adult Recognition Award?

AHG Adult Recognition Awards are honors reserved specifically for outstanding Adult Members of the American Heritage Girls Program. Some examples include AHG Position Bars, AHG Tenure Pins, Gem of a Leader Award Pins, Jewel of a Coordinator Award Pins, Presidential Service Award Pins, Stars & Stripes Mentor Pins, etc.

2. Where are AHG Adult Recognition Awards placed on the uniform?

Every AHG Adult Recognition Award has a specific place on the AHG Official Adult Uniform Polo:

- A. AHG Membership Pin
- B. AHG Volunteer Tenure Pin
- C. Presidential Service Award
- D. Religious Recognition
- E. Gem of a Leader/Jewel of a Coordinator Awards:
 - 1. Ruby
 - 2. Sapphire
 - 3. Diamond
 - 4. American



ADULT RECOGNITION TAB

1. What is the Adult Recognition Tab?

The Adult Recognition Tab is an optional uniform piece for Adult Members. This ribbon with a magnetic attachment holds AHG Official Award Recognitions and prevents damage to an Adult Member's AHG Official Adult Uniform Polo or AHG Official Adult Uniform Dress Blouse.

2. Who can wear the Adult Recognition Tab?

Any registered LIT or Adult Member of American Heritage Girls may wear the Adult Recognition Tab with their AHG Official Class A Uniform Polo or Dress Blouse.

3. Where should the Adult Recognition Tab be placed?

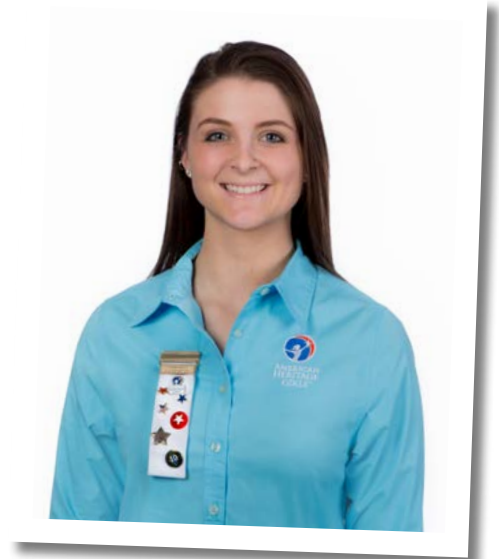
The Adult Recognition Tab is placed on the right side of the AHG Official Adult Uniform Polo or AHG Official Adult Uniform Dress Blouse, opposite of the AHG Logo.

4. What should be put on the Adult Recognition Tab?

Any official AHG Adult Recognition Awards may be placed on the Adult Recognition Tab.

5. Why was the Adult Recognition Tab created?

The Adult Recognition Tab was created so that Adult Members have one spot to place all of their recognitions. The Adult Recognition Tab is easy to move from one shirt to another with its magnetic backing.



SPIRIT WEAR

1. What is spirit wear?

Spirit wear is considered to be any Troop-designed and purchased apparel or other AHG non-uniform shirt found in the AHGstore and worn with appropriate modest pants, jeans, shorts, skirts, or capris.

2. Who can wear spirit wear?

Spirit wear is available to all AHG supporters. Spirit wear is a great way for non-registered parents, siblings, and other family members to show their love for the AHG Program.



UNIFORM ETIQUETTE

1. Does one salute the flag when wearing a Class B Uniform or place the right hand over the heart?

When in the AHG Official Class A Uniform or in an AHG Official Class B Uniform, Girl Members and Adult Members should salute the flag. When in spirit wear or other attire, the right hand should be placed over the heart.

2. When participating in a flag ceremony as a flag bearer or color guard what is the uniform standard?

The uniform standard for a flag ceremony is AHG Official Class A Uniform, whether Troop meeting or special event.

3. When participating in a flag ceremony at camp, is the AHG Official Class A Uniform required?

Although, the AHG Official Class A Uniform is preferred, the AHG Official Class B Classic T-Shirt may be worn.

4. When gathering for a Troop meeting, what uniform should Girl Members and Adult Members wear?

Unless the planned Troop meeting includes a particularly messy activity, outdoor adventure, etc. AHG Girl and Adult Members are expected to wear the AHG Official Class A Uniform.

5. When is it appropriate to wear the AHG Official Class B Classic T-Shirt?

The AHG Official Class B Classic T-Shirt is preferred to be worn for media appearance, service projects, parades, and during the flag ceremony at camp.

6. When is it appropriate to wear the AHG Official Class B Reach Higher T-Shirt?

The AHG Official Class B Reach Higher T-Shirt is to be worn for field trips and camping, or any outing/activity where girls are in groups by Program Level.

6. Do Girl and Adult Members all need to be wearing the same type of uniform?

All members of a Troop need to be wearing the same type of uniform whenever they are gathered together. Mixing of AHG Official Class A Uniforms and AHG Official Class B Uniforms is not permitted. Mixing of AHG Official Class B Classic T-Shirts and AHG Official Class B Reach Higher T-Shirts is also not permitted.

